



**FRC**

# ASSET ACCOUNTABILITY

Reduce Equipment Loss

**SafeTrack™**  
ASSET TRACKING SYSTEMS

SAFE  FLEET  
Driving Safety Forward™





# MANAGING ASSETS

## WHAT SAFETRACK DOES

- Mitigates loss of expensive equipment
- Assists with missing equipment recovery
- Assists with equipment availability and readiness

### Mitigate the loss of equipment at an incident response site

SafeTrack notifies the crew if any tagged equipment is not onboard.

### Ensure equipment is onboard prior to an incident response

Notifies the crew if tagged equipment is not present on the apparatus via in-cab indicator or operator interface before responding to a call.

### Facilitate the recovery of equipment in the field

Informs the crew of the last known location of tagged equipment relative to the apparatus location when the equipment was removed and not returned via the operator interface.

The SafeTrack user interfaces are accessible on any device that runs a web browser and has Wi-Fi. For example an Android, IOS, or Windows-based tablet.

No separate or fixed display device is required.



## PREVENT EXPENSIVE EQUIPMENT LOSSES

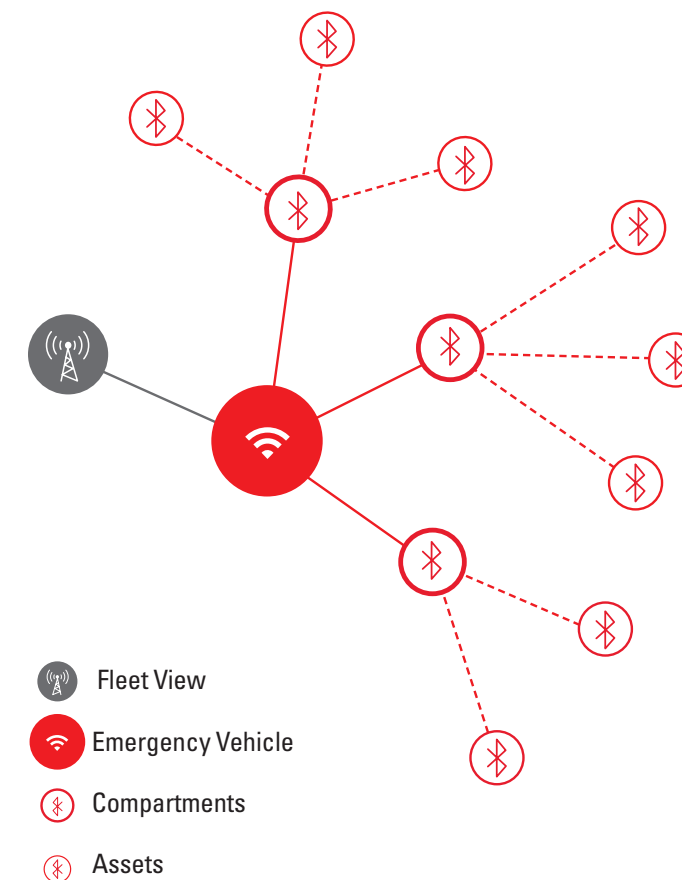
Equip your apparatus with the high-tech SafeTrack system to assure your valuable or mission critical equipment is on the vehicle and has not been left at the scene or is onboard when responding to a call. Designed specifically for accountability of assets by compartment, SafeTrack will provide immediate visual notification that a tagged asset is not located in the designated storage location.

Upon notice of a missing piece, the operator can simply access the system dashboard, via any device that runs a web browser, to identify the missing piece along with the GPS location of last time on the apparatus. No special apps to operate, the browser run system is capable of managing multiple assets per compartment; giving you the flexibility to manage all of your key equipment.

The initial setup and identification process is made easy with the wizard's step-by-step process. Ideal for new builds and retrofit applications with packages designed to simplify both installations. Rest easy knowing that your equipment is in place when you specify SafeTrack.

## HOW SAFETRACK WORKS

- A SafeTrackTag is physically attached to each asset
- SafeTrack Tags send Bluetooth signals
- A SafeTrack Relay is installed at each of the assets storage compartments
- The SafeTrack Relay listens for Bluetooth signals from the SafeTrackTags
- The SafeTrack Relay sends the information to SafeTrack Hub
- The SafeTrack Hub applies logic to determine the status of an asset:
  - Stored in correct location
  - Not present on vehicle
- SafeTrack Hub records the status, timestamp and GPS location
- The cab mounted status indicator warning light illuminates to notify the crew if any equipment is missing or needs attention.
- The mobile web user interface provides details on specific equipment that may need attention.
- Tracks multiple tagged equipment located in the same compartment





# SAFETRACK™

## Hardware

### ROBUST DESIGN

Designed and tested to stand up in the harshest conditions. The systems include cables required for non-wireless components. One Hub per apparatus, one Relay per compartment. Wi-Fi, GPS, Bluetooth, and optional cellular communications are delivered through the externally mounted combination antenna.



### SafeTrack Hub

Equipment asset tag is housed in vehicle's cab. Bluetooth and Wi-Fi communicate with relays, tags and the user. The Hub supports cellular cloud connectivity.

- One Hub per vehicle
- Power source – Vehicle
- Asset status processing center
- Web enabled status dashboard
- GUI is Wi-Fi accessible
- Controller for status LED
- GPS enabled



### SafeTrack LED

The LED notifier mounts in the cab to provide the crew visual notification of a missing tagged asset.

- Red, Green, or Amber LED
  - Green-On apparatus located correct compartment
  - Amber-On apparatus located incorrect compartment
  - Red-Not on apparatus
- Typically mounted on the cab's dash
- Power by the SafeTrack Hub



### SafeTrack Relay

Compartment reader relay unit mount in storage compartments use Bluetooth to receive messages from SafeTrackTags and communicate with the SafeTrack Hub.

- One SafeTrack Relay per monitored compartment
- Power source – two options:
  - Battery: 2 Type D
  - Vehicle: 12VDC/24VDC
- Each Relay can handle 5 assets. Contact factory if application requires more than 5 track assets in the compartment



### Antenna

External roof mounted antenna supports:

- Cellular
- GNSS/GPS
- Wi-Fi
- Bluetooth



### SafeTrack Tag

The asset tags attach to equipment or tools and use Bluetooth to send a signal to the SafeTrack Relay.

- Powered by high temp resistant battery
- Mounted on asset/tools
- Mount with adhesive or secure tie
- One Tag per asset/tool



# SAFETRACK™ Software

## SAFETRACK IS AVAILABLE IN TWO MODES

### Truck View

The operator-accessible SafeTrack dashboard, viewable on any browser-equipped device, provides details on the specific apparatus. Details include compartments that are equipped with SafeTrack Relays and tagged assets status by each compartment. It also provides GPS coordinates as well as the date and time of when the equipment was last detected in the compartment.

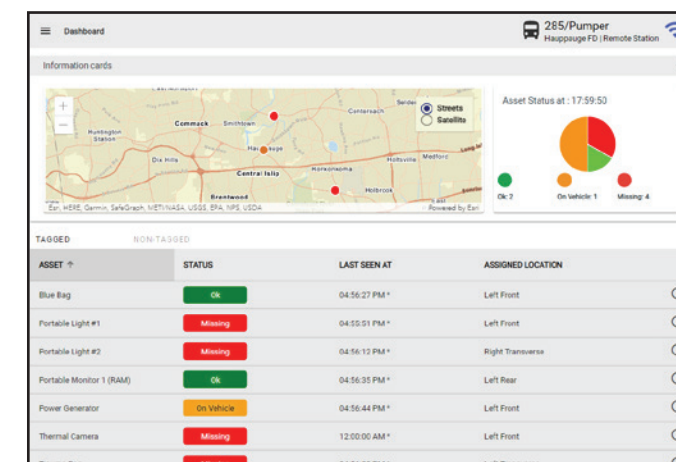
### Fleet View

Designed for monitoring more than one apparatus from an office desktop, it combines all SafeTrack-equipped dashboards into one management tool via cloud connectivity. View real-time fleet location, generate reports, set up apparatus, and more.

### Truck View Software

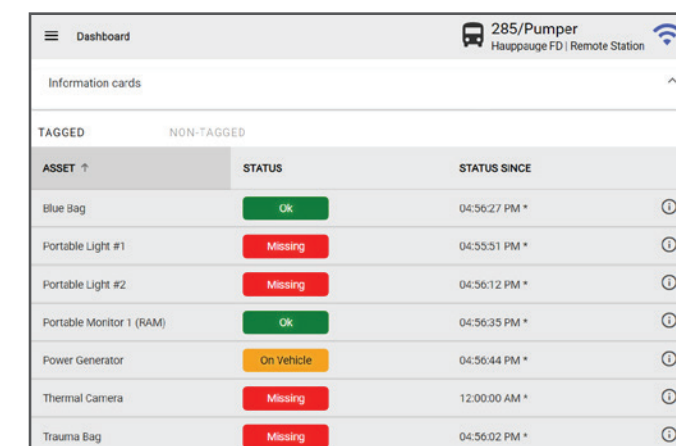
A web server and a web browser-based application are hosted on the SafeTrack Hub which is configured with a local Wi-Fi hotspot. This local web application is used by personnel in the field to check the status of tagged assets that may be missing or not on board. Staff can use any Wi-Fi-enabled device with a web browser to connect to the web application and view the absence/presence status of various tagged assets.

The Hub communicates with the cloud-based software and periodically sends presence/absence update messages. This allows a Fleet View user to get a view of the asset activity in the field.



### Truck View Dashboard

- Expanded view for geolocating last position of assets
- Provides real-time asset status
  - Green on apparatus correct compartment
  - Amber on apparatus incorrect compartment
  - Not on apparatus
- Displays asset name and compartment location
- Date/time stamps and mapping of last know location
- Pie Chart summary as a glance



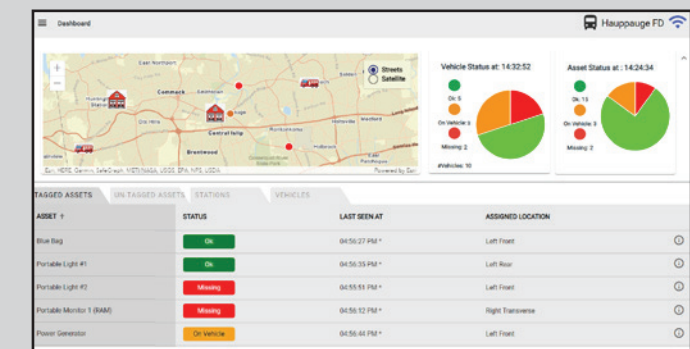
### Mobile Dashboard with Map & Chart Collapsed

- Great for smaller displays
- Shows immediately needed data

### Fleet View Software

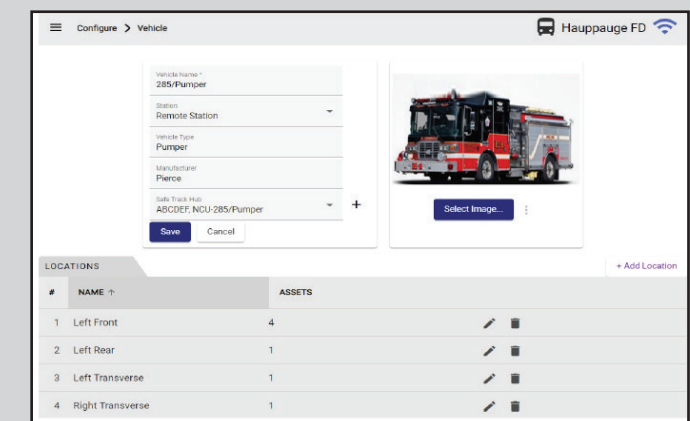
An optional comprehensive management system allows station chiefs, maintenance, or inventory managers to see a fleet-level view of assets. Hosted in the cloud, this web browser-based application and database contains the master asset list with specific stations, vehicles and locations within the vehicle, the association of assets with tags, and an asset presence/absence history. The Fleet View software houses data on all stations and vehicles, as well as assets within the organization.

The Fleet View can also be used for setting up new assets/Tags or updating information on existing assets/Tags. Each vehicle's SafeTrack Hub connects to the Fleet View and synchronizes data.



### Fleet View Dashboard - Asset View

- View real time location of stations, fleet vehicles, and assets on map
- Summarized fleet status data



### Fleet View Dashboard - Apparatus Details

- Maintain detailed vehicle information
- View compartments and storage locations on vehicle with assets counts for each



# FRC

1-03-2023

Copyright ©2023 Safe Fleet and its subsidiaries. All rights reserved. No part of this publication may be reproduced by any means without written permission from Safe Fleet. The information in this publication is believed to be accurate. However, Safe Fleet does not make any representation or warranty to that effect and does not assume responsibility for any consequences resulting from use of such information. Revisions or new editions of the publication may be issued (or not issued) in our discretion to incorporate such changes.

[www.fireresearch.com](http://www.fireresearch.com)  
+1 631.724.8888  
[sales@fireresearch.com](mailto:sales@fireresearch.com)

SAFE  FLEET  
*Driving Safety Forward™*